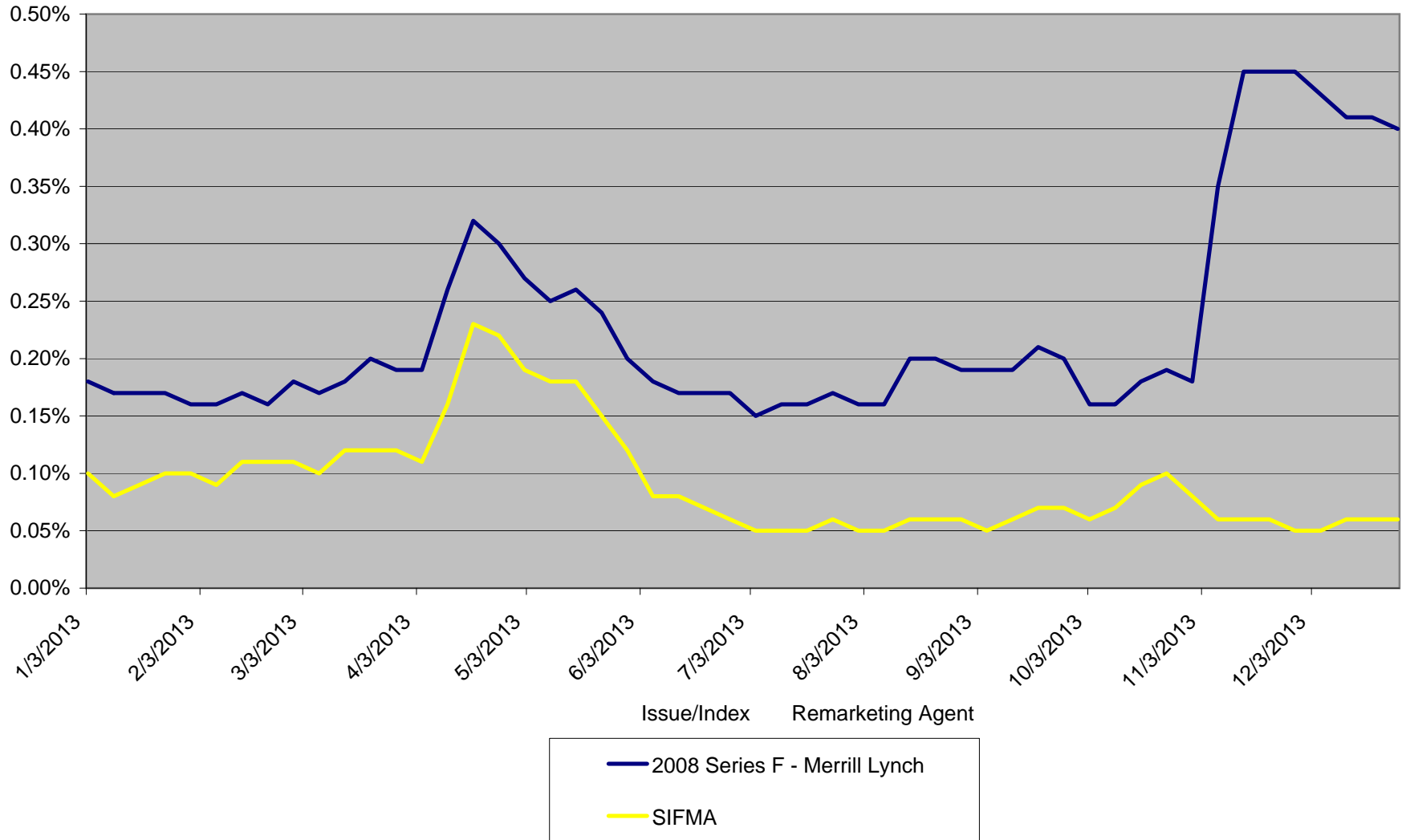




New Jersey Educational Facilities Authority Variable Rate Tracker

The College of Saint Elizabeth 2008 Series F - Variable Rate Demand Obligations RBS Citizens Letter of Credit



*NJFEA makes every effort to ensure the accuracy of this report, but cannot guarantee that it is error free. Please contact Jamie@njefa.com to report any inaccuracies.